









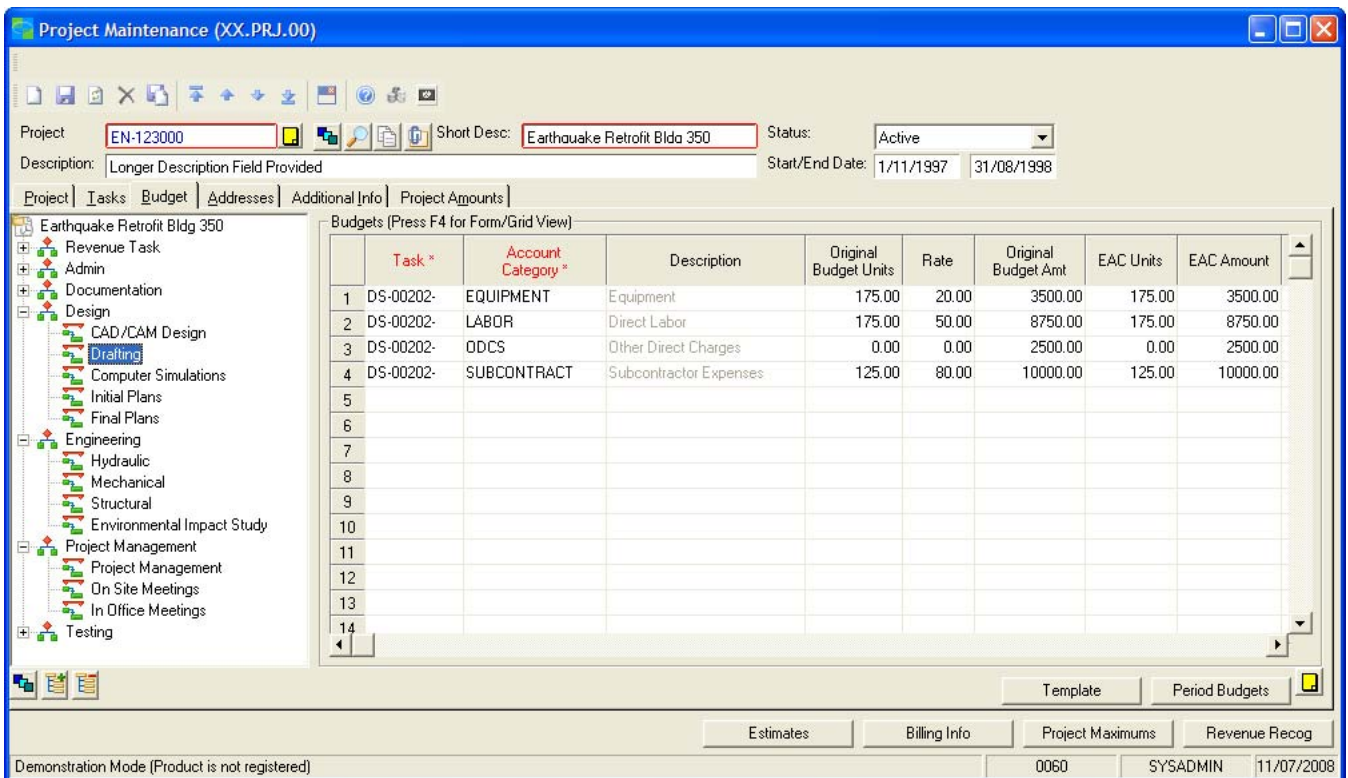


KEY FEATURES OF RENOWN PROJECT MAINTENANCE:

Renown's Project Maintenance screen has been designed to improve the efficiency of maintaining Projects and Project Budgets. Functions are provided to quickly and easily copy tasks or whole WBS Sections within or across Projects.

-  Tree Control available in Task and Budget grids.
-  Copy budgets with automated period spreading.
-  Budget allows Costs & Revenues on the same row.
-  Improved screen layout especially project amounts.
-  Editable grid added for project Address maintenance.
-  80 Char Description, Extra ID Fields & Managers.
-  Enhanced Project Copy function with Task selection.
-  Notes, Images & Attachments function provided.

An enlarged screen allows an improved layout and delivering more information to the user in an easier read format.



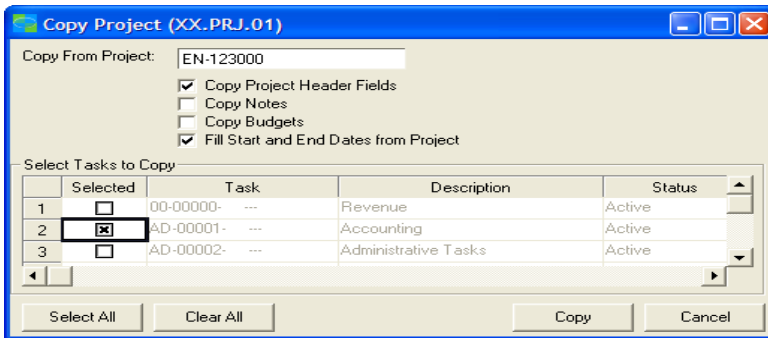
Task *	Account Category *	Description	Original Budget Units	Rate	Original Budget Amt	EAC Units	EAC Amount
1 DS-00202-	EQUIPMENT	Equipment	175.00	20.00	3500.00	175.00	3500.00
2 DS-00202-	LABOR	Direct Labor	175.00	50.00	8750.00	175.00	8750.00
3 DS-00202-	ODCS	Other Direct Charges	0.00	0.00	2500.00	0.00	2500.00
4 DS-00202-	SUBCONTRACT	Subcontractor Expenses	125.00	80.00	10000.00	125.00	10000.00
5							
6							
7							
8							
9							
10							
11							
12							
13							
14							

[Right][Click] on node in the WBS Tree displays a Menu, which allows the user to expand and collapse the tree to a selected level. The Menu also allows the user to Copy sections of the WBS Tree. This will copy all the details for all Tasks included in that WBS section. If the Copy was performed in the Budget tab it also copies the Budget details.

It is then possible to Paste the copied WBS Section, its Tasks and Budgets into a new Section in the current Project. If you open a second Project Maintenance screen it is possible to Paste the copied details into an alternate Project. This functionality to Copy and Paste between screens makes it very easy to build new Projects and Project Budgets.



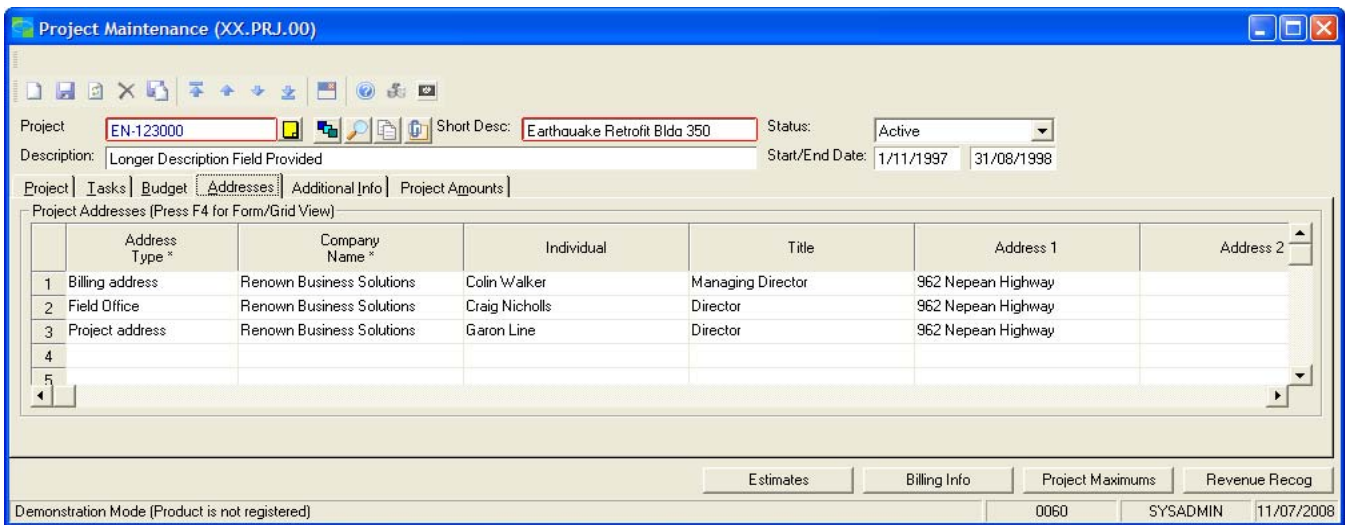
Extra buttons have been added to the header to allow; Powerful Project Search, Advanced Project Copy and File Attachments. For more details on the File Attachments functionality refer to Renown's 'Notes and Attachments' module. The Project ID creation button offers enhanced incrementing features.



The Project Copy Function allows you copy selected Tasks from multiple Projects. It is possible to copy Project Header details, Project Notes and Budget details for selected Tasks.

Once you have copied the Tasks and Budgets from a selected Project, simply chose another Project, select the required Tasks and copy those details as well. You can repeat the process for as many projects as is required.

The Addresses tab has an editable grid allowing all Project addresses to be reviewed and maintained in one simple list avoiding the necessity to launch a forms based sub-screen. Details can be copied and pasted into the grid from Excel.



The Projects Amounts tab is enhanced to show a quick clear summary of the total Cost, Revenue and Profit for the Project including columns for Actual, Commitment, Estimate To Complete and Estimate At Complete. A button is also available to launch the Project Net Profit screen for the selected Project if more detailed analysis is required.

